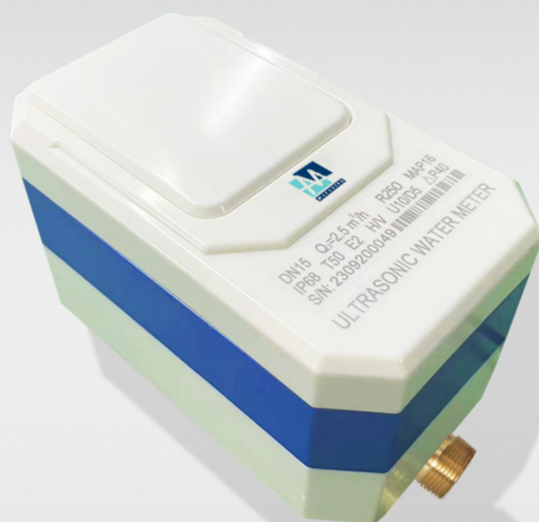


S11

INTELLIGENT MODEL



**MAKE
EVERY DROP OF
WATER MORE VALUABLE**

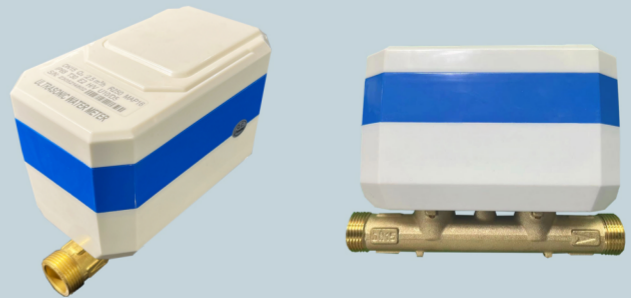
MAKE
EVERY DROP OF
WATER MORE VALUABLE



S11

RESIDENTIAL ULTRASONIC WATER METER

LXC 15-40



APPLICATION

S11 LXC 15-40 Ultrasonic water meter is designed for accurate measurement of cold water consumption in households, apartment buildings, and commercial premises.

- Optional remote valve control to limit water use (DN15-25);
- No moving parts design to reduce wear;
- Reliable design supports long-term stable operation;
- Record total volume as small as 1mL;
- 9 digits LCD. Total volume and instantaneous flow rate indication;
- Low power consumption circuit board design extends service life;
- Battery compartment with enough space reserved, ER34615 battery (optional);
- Ready for AMR with wired and wireless communication technologies.

AMR READY

- Wired:RS485 modbus;
- Wired:Pulse;
- Wireless:LoRa,LoRaWAN (EU863-870, AS923, AU915-928, US902-928, IN865-867 channel plans);
- Wireless:NB-IoT (CoAP);
- Wireless:GPRS(2G/4G);
- Infrared reading.

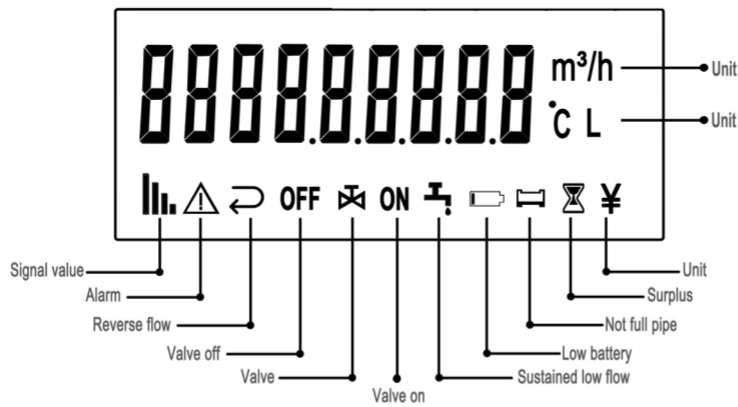
TECHNICAL FEATURES

- No measurement of air;
- Nominal flow 2.5/4.0/6.3/10/16 m³/h;
- Q3/Q1 = R250/400(optional);
- Supports installation at any position or angle;
- IP68 suitable for outdoor installations;
- Temperature class T30, T50, T70(customizable);
- Environment class E1/M1;
- Nominal pressure PN16;
- Bi-directional flow measurements;
- U5/D3, straight pipe sections required before or after the meter;
- Copper or stainless steel body;
- Display with error and alarm codes including leakage detection.

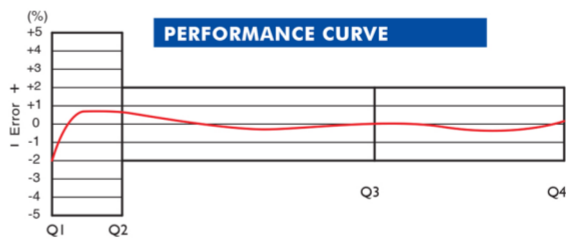
WIRELESS AMR INTERFACES



LCD INDICATIONS AND ALARMS

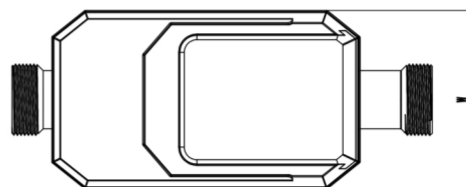
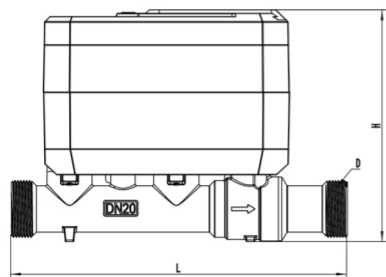


TECHNICAL FEATURES



Nominal diameter	mm	15	20	25	32	40					
Overload flow rate	Q4	m³/h 3,125	5	7.875	12.5	20					
Nominal flow	Q3	m³/h 2,5	4	6.3	10	16					
Transitional flow	Q2	L/h 16	10	25.6	16	40.32	25.2	64	40	102.4	64
Min flow	Q1	L/h 10	6.25	6.25	10	25.2	15.75	40	25	64	40
Measuring range	Q3/Q1	R250	R400	R250	R400	R250	R400	R250	R400	R250	R400
Minimum reading	mL	999.999999									
Max reading	L	999999.999									
Power supply	V	Built-in lithium battery DC 3.6V									

Caliber	Unit	DN15	DN20	DN25	DN32	DN40
L	mm	165	195	225	180	200
L1	mm	260	300	346	305	330
W	mm	83	83	83	83	83
H	mm	135	135	138	140	142
Meter thread		R ₂ ¹ / ₂	R ₄ ³ / ₄	R1	R1 ¹ / ₄	R1 ¹ / ₂
Connecting Pipe thread (D)		G ₄ ³ / ₄ B	G1B	G1 ¹ / ₄ B	G1 ¹ / ₂ B	G2B



Make every drop of water more valuable

